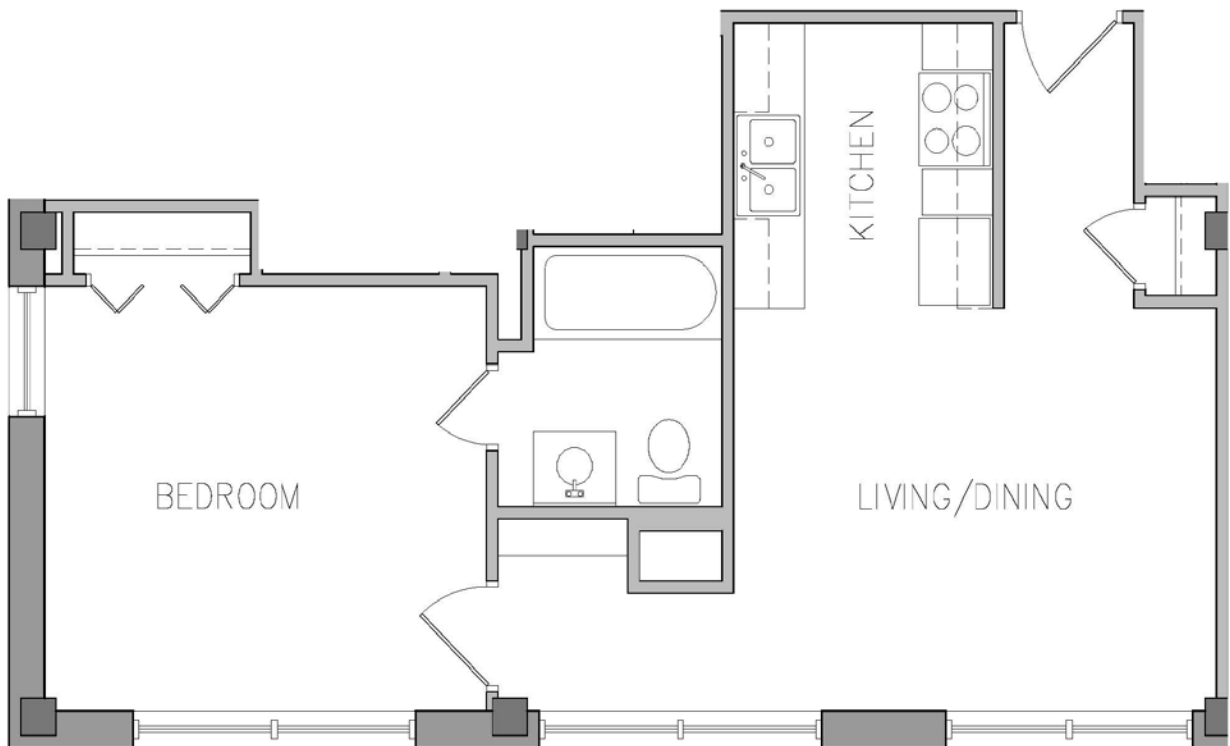


# TURNER APARTMENTS

**Units:** 202, 302, 402, 502

**Floors:** 2 - 5

**Type:** 1 x 1



*Floor plans are not to scale. There are no guarantees as to size, space and layout as all the images are rendered as artist conception. Due to the historical nature of the Turner building, each apartment is unique.*

501 East California Street, Gainesville, Texas 76240 | 940.665.1747 | [www.turnerapartments.com](http://www.turnerapartments.com)

